

LightON 3

DMX Console



LightON 3 is a 512 channel DMX console to control both conventional lighting, Moving Light and LEDs.

LightON 3 features 6 operation modes: Single scene, Two scene, Sub Master, Moving Light, LED and Memory.

With the first two, you can select a scene and setting the time, trigger them with the fader A and B for their respective output. In Sub Master mode, you access any of the 576 recorded scenes (48 scenes x 12 pages) that can be triggered by setting the fade time. It also allows a crossfade between the two preparations.

Moving Light mode allows the control of moving heads and scanners, editing and assigning turns and figures in many ways or to group several units for more generic control.

LED mode allows RGB LED devices to operate and make effects, and groups of units or patching them as a simple manner.

The large number and ease of creating scenes in any of the operation methods, extends considerably the possibilities of the console.

All operating information and levels of each channel are shown as bar graph in the large format LCD and contrast control.

The buttons are backlit, in obedience to their brightness to the intensity in the channel and changing its color according to the function or condition applied.

Its connectivity is shown with a USB connection for loading / downloading of data and internal software updates, and ArtNet port for connection to compatible devices using Ethernet network, allowing the integration of the console in a control network.

It incorporates a port for inserting a VGA card 800 x 600 pixels (optional) for the monitored console.

Features

- Multi-Purpose Control Console: Conventional lighting, Moving Light and LED.
- LCD 60 x 128 dots with adjustable contrast.
- USB port for upload / download data and software upgrade.
- Artnet port for fast communication with compatible devices.
- 6 modes: Single, Double Scene, Sub Master, Moving Light, LED and Memory.
- 24 faders to control conventional lights, moving heads and LED.
- 576 recordable scenes (48 scenes x 12 pages) Sub Master mode for conventional lights.
- Control up to 8 Moving Light up to 40 channels each. 20 playbacks of 99 steps each in mode Moving Light.
- Control up to 8 RGB LED devices. 20 playbacks of 99 steps each LED mode.
- 12 onboard effects. Each with speed and fade time configurable, 99 maximum steps in each effect.
- Memory Mode that allows a combination of sub Master, Moving Light and LED modes.
- Grand Master fader for total control of the output.
- General Faders A and B with separate output allow crossfade between them.
- Blackout Function.
- Backlit buttons that change color and intensity according to your state.
- Port for the insertion of a VGA card of 800 x 600 pixels for monitor output (**OPTIONAL**).
- Power supply: 9 to 12 V DC, 2A (supply included).

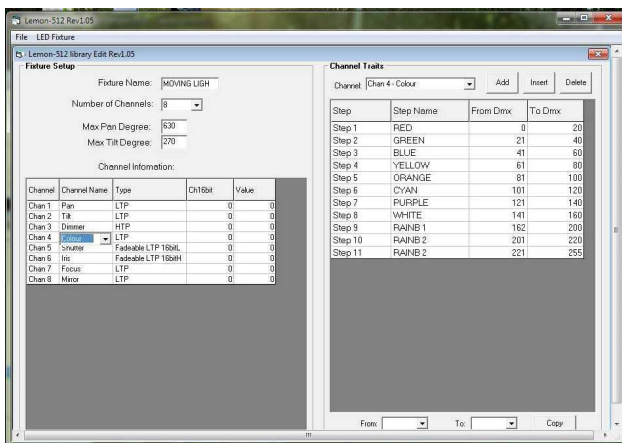
LightON 3

Rear View



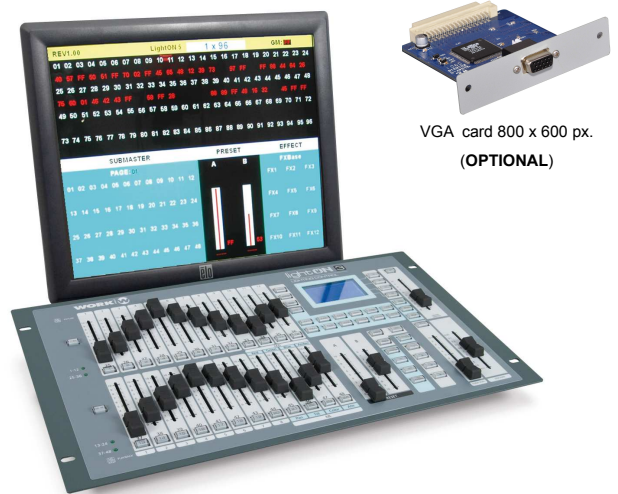
Libraries

In our website you can download the libraries of the more important moving heads and LED devices in the market. These libraries are constantly updated. Furthermore, in the same website, it is possible to download the software to create libraries that can customize or create a device that does not exist.



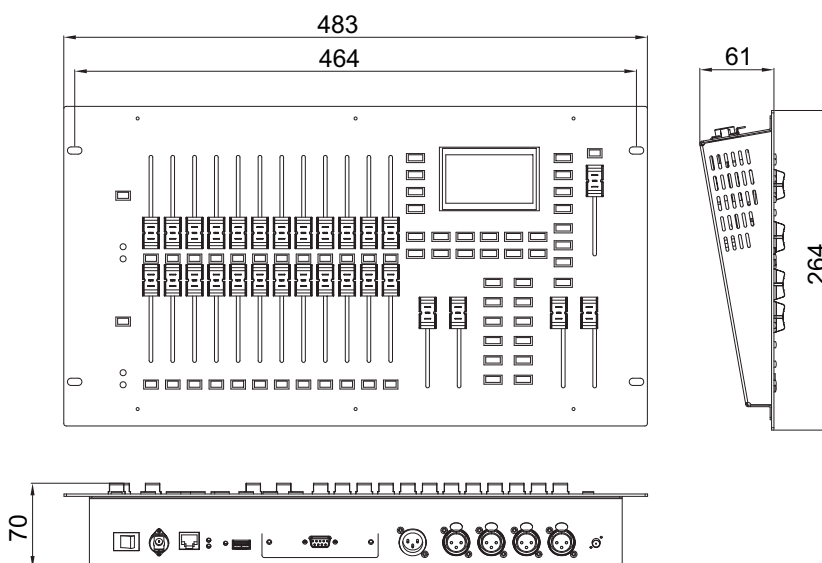
VGA output

LightON 3 includes a slot for inserting a VGA card (OPTIONAL) for displaying the channel status, values and features enabled on a monitor.



Dimensions

* In mm.



Specifications

Operating modes:	Single, Two Scene, Submaster
DMX channels:	512 channels (1 Universe)
N° scenes:	576 (48 scenes x 12 pages)
N° channel faders:	24 faders
ML Control:	8 (up to 40 channels each one)
LED Control:	8 (20 playbacks)
LCD display:	60 x 128 dots (backlighted)
Connectivity:	Ethernet port, USB port, DMX IN, DMX OUT 3p/5p
Main supply:	9 - 12V dc / 2A
Dimensions:	483 x 264 x 66 mm
Weight:	4.1 kg



Rev. 12.06.01